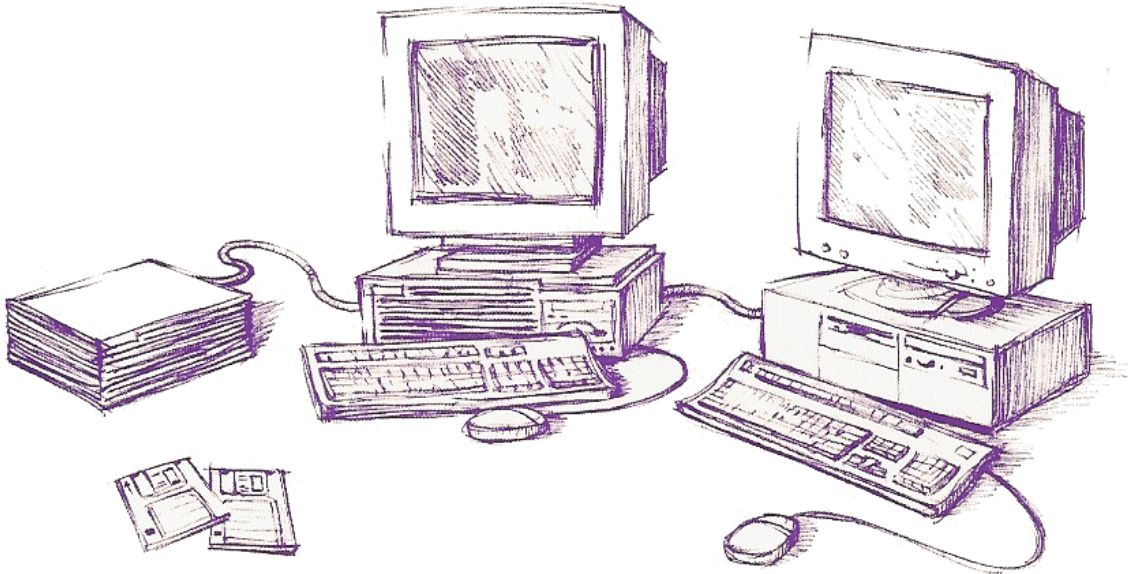




EZ-Transfer for RMB™



▼ Save Time and Money in Data Transfers

Now you can save thousands of dollars in time spent **transferring HP BASIC/WS or BASIC/UX files** to a PC to become **Transera HT Basic for Windows or HP BASIC for Windows files**. EZ-Transfer for RMB™, from AccuMeasure® Software, Inc., automates the file transfer process, saving you time and money. You no longer need to use "Sneaker Net" transfer of workstation BASIC files to PC disks for BASIC for Windows. Many HP BASIC users need to transfer hundreds of MegaBytes of files from workstations to run with TransEra HTBasic for Windows or HP BASIC for Windows. Unfortunately, BASIC for Windows can't read an HFS disk, or any GP-IB disk, and all of the files need to be changed from workstation BASIC PROG file format to Windows BASIC PROG file format.

AM1044A-June 2004

▼ Transferring files, entire directories or entire disks automatically

EZ-Transfer for RMB does all of the following, automatically transferring entire directories, or entire disks, to a PC Windows disk via GP-IB:

- Directory structure is maintained;
- Workstation PROG files converted to ASCII, then to PC PROG file format;
- Optionally changes file and directory names to meet DOS File System (8+3 character) name constraints;
- Customers with networked BASIC workstations and PCs can use the LAN connection for file transfer;
- Customers without a network connection can transfer files via IEEE-488 (GP-IB);
- Works with BASIC/WS/300, BASIC/UX/300, BASIC/UX/700, and the BASIC Language Processor;
- Works with LIF or HFS file systems;
- Works with SRM or SRM/UX file systems;
- Works with BASIC for Windows on MS/Windows 95, 98, NT, 2K, XP.

▼ System Requirements

EZ-Transfer requires an RMB platform:

For Workstations, EZ-Transfer runs on HP BASIC/UX on the series 300 or 700, HP BASIC/WS on the series 200 or 300, and the HP Measurement Coprocessor (MCP). The product is supported on HP BASIC/WS (and MCP) revisions 5.x and 6.x. and all revisions of BASIC/UX. It will likely work on all revisions of BASIC that support a revision 6.x PROG file. The product does not contain any CSUB files. so CSUB compatibility among revisions of HP BASIC is not an issue. EZ- Transfer supports SRM and SRM/UX file systems.

For PCs, the product works with TransEra HT BASIC for Windows and HP BASIC for Windows. It works with all revisions of BASIC for Windows. It also works with the HP Measurement Coprocessor card, which is covered above as a workstation product, even though it plugs into a PC.

GP-IB Requirements, EZ-Transfer on a PC uses HT or HP BASIC to transfer files via GP-IB. Therefore, you need to have a GP-IB card that is supported by HT or HP BASIC for Windows. If the workstation is networked to the PC, and you plan to transfer files via the network, you do not need a GP-IB.

EZ-Transfer is an AccuMeasure product. To get more information,

For any country outside USA, please contact :



BOURBAKY Test & Mesure
BP36
07302 Tournon-sur-Rhone
France
Tél +33 (0)4 75 07 81 20
Fax +33 (0)4 75 07 29 74
Web : <www.bourbaky.com>
Email : <info@bourbaky.com>

For USA, please contact :



Test & Measurement Systems Inc.
750 14th Street SW
Loveland, CO 80537
USA
Tel: + 970-669-6553
Fax: + 970-669-3090
Web : <www.tamsinc.com>

AM1044A-June 2004